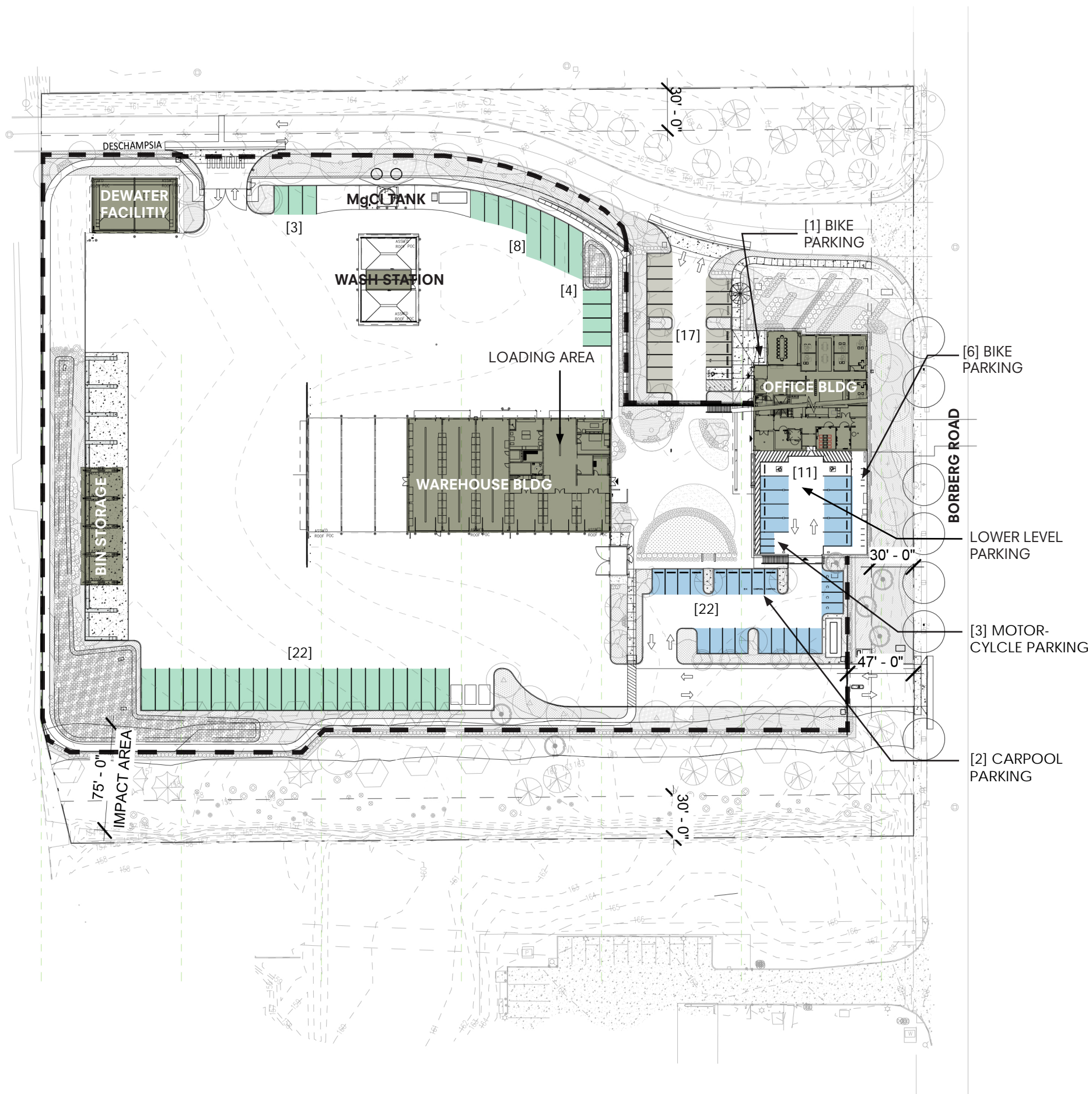




**LEGEND**

- SECURITY FENCE
- DECORATIVE MTL FENCE
- ◇◇◇◇◇ OPAQUE CHAIN LINK FENCE



### PARKING SUMMARY



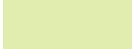



REQUIRED MIN PARKING SPACES:	48
VISITOR PARKING	16
STAFF PARKING:	31
ACCESSIBLE PARKING:	3
PROPOSED PARKING SPACES:	50
FLEET + EQUIP STORAGE SPACES:	37

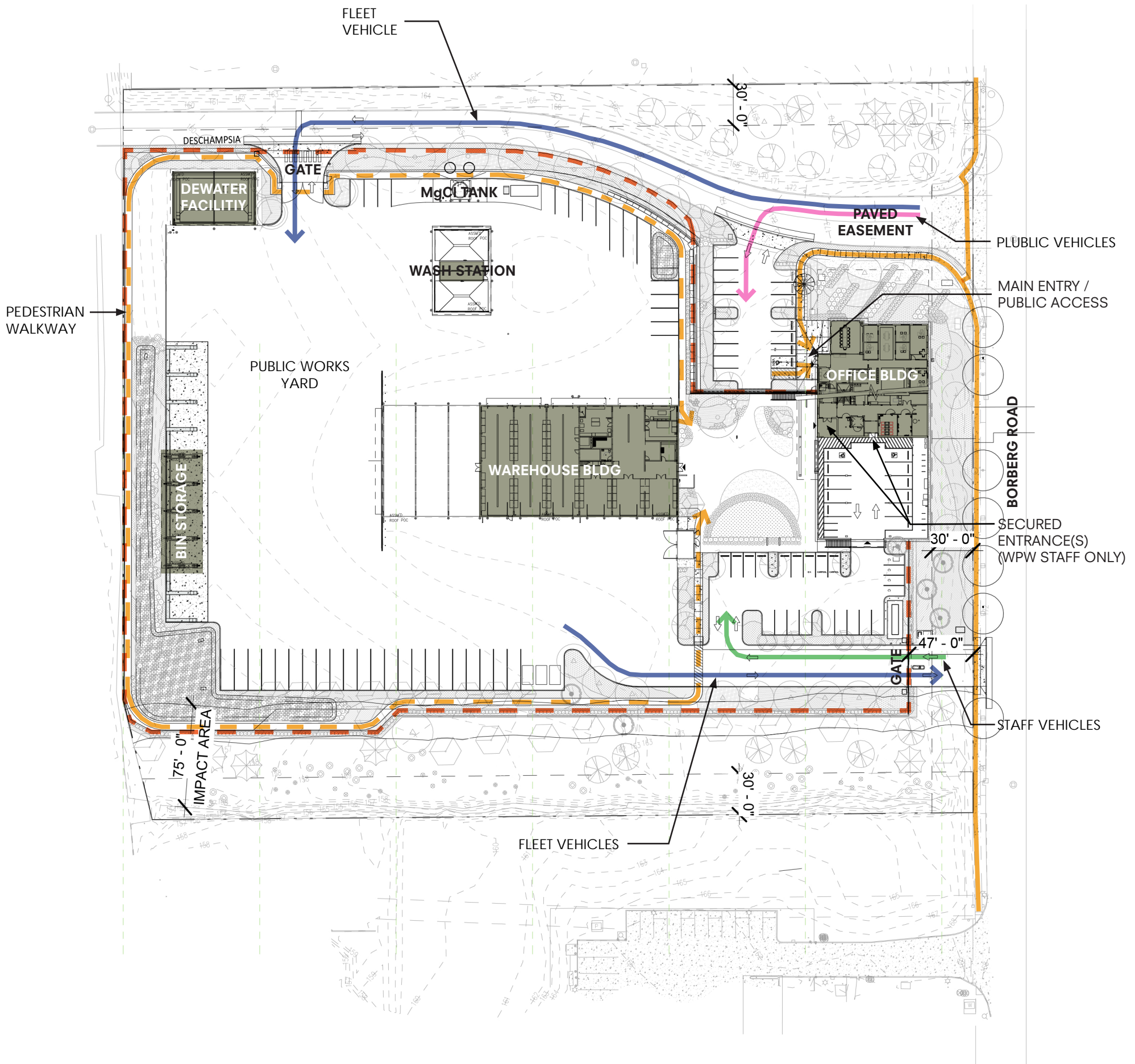
### LEGEND

- VISITOR PARKING
- STAFF PARKING
- FLEET VEHICLE + EQUIP STORAGE
- SECURITY FENCE



**LEGEND**

-  EXISTING TREE
-  NEW TREE
-  PLANTING AREA
-  STORMWATER FACILITY
-  SROZ ZONE
-  SECURITY FENCE

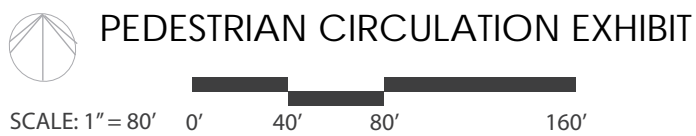


**LEGEND**

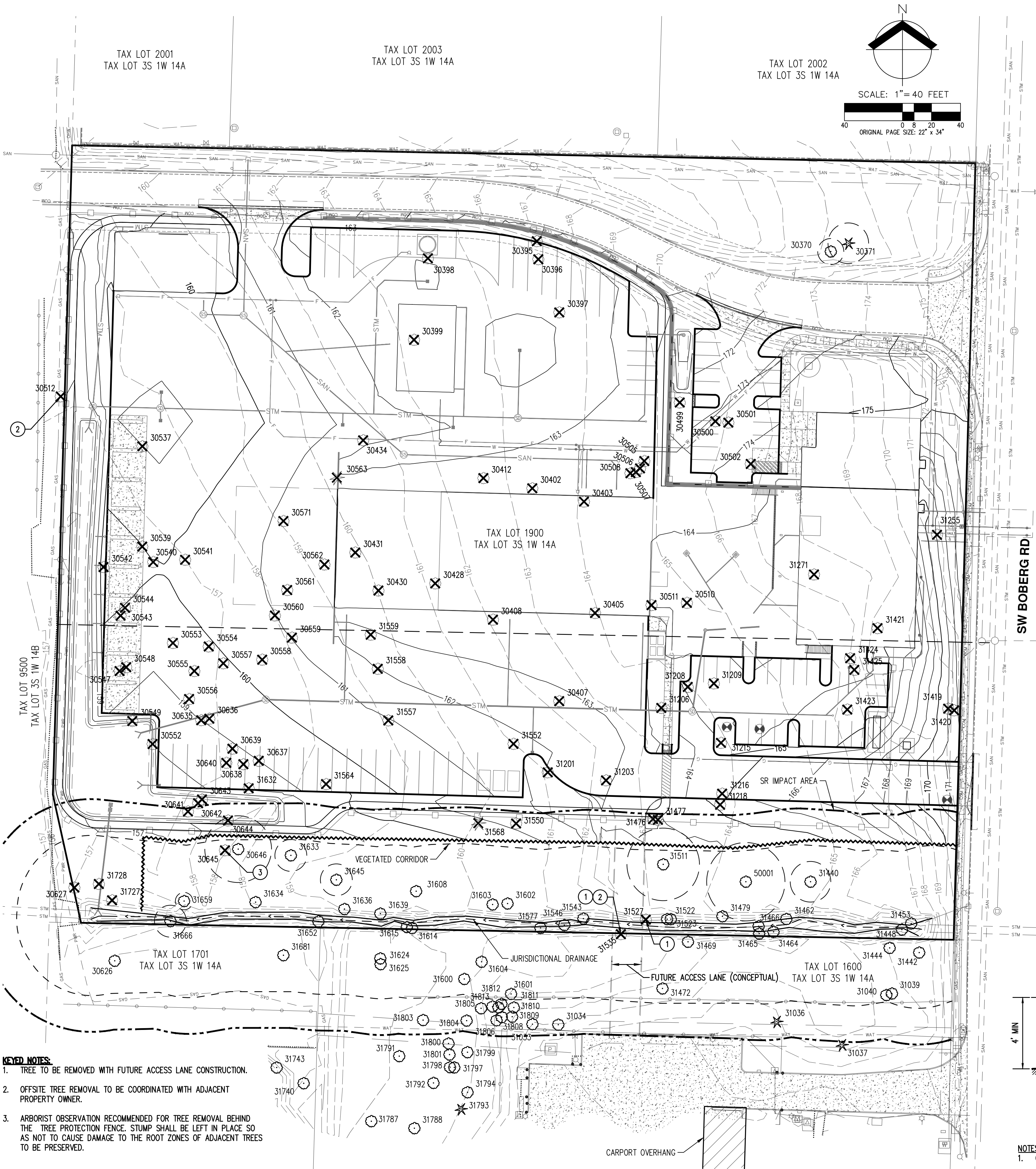
- - - SECURITY FENCE
- PUBLIC PEDESTRIAN PATHWAY
- ON-SITE PEDESTRIAN PATHWAY
- FLEET VEHICLES
- PUBLIC VEHICLES
- STAFF VEHICLES

ALL BUILDING ENTRANCES WITHIN THE FENCED YARD ARE SECURED ENTRANCE(S) (WILSONVILLE PW STAFF ONLY)

**WILSONVILLE PUBLIC WORKS COMPLEX**  
 SW BOBERG ROAD  
 WILSONVILLE, OR 97070  
 REV 29 SEPTEMBER 2021 | PROJ. NO. 20102



**TREE PRESERVATION  
 AND REMOVAL PLAN**



- KEYED NOTES:**
- TREE TO BE REMOVED WITH FUTURE ACCESS LANE CONSTRUCTION.
  - OFFSITE TREE REMOVAL TO BE COORDINATED WITH ADJACENT PROPERTY OWNER.
  - ARBORIST OBSERVATION RECOMMENDED FOR TREE REMOVAL BEHIND THE TREE PROTECTION FENCE. STUMP SHALL BE LEFT IN PLACE SO AS NOT TO CAUSE DAMAGE TO THE ROOT ZONES OF ADJACENT TREES TO BE PRESERVED.

**TREE PRESERVATION NOTES:**

- PLACING MATERIALS NEAR TREES:**
- NO PERSON MAY CONDUCT ANY ACTIVITY WITHIN THE TREE PROTECTION AREA OF ANY TREE DESIGNATED TO REMAIN, INCLUDING, BUT NOT LIMITED TO, PARKING EQUIPMENT, PLACING SOLVENTS, STORING BUILDING MATERIAL AND SOIL DEPOSITS, DUMPING CONCRETE WASHOUT.

**ATTACHMENTS TO TREES:**

- DURING CONSTRUCTION, NO PERSON SHALL ATTACH ANY OBJECT TO ANY TREE DESIGNATED FOR PROTECTION.

**GRADING NEAR TREES:**

- THE GRADE SHALL NOT BE ELEVATED OR REDUCED WITHIN THE TREE PROTECTION AREA OF TREES TO BE PRESERVED WITHOUT THE PROJECT ARBORIST'S AUTHORIZATION. THE PROJECT ARBORIST MAY ALLOW COVERAGE OF UP TO ONE HALF OF THE AREA OF THE TREE'S OPTIMAL TREE ROOT PROTECTION ZONE WITH LIGHT SOILS (NO CLAY) TO THE MINIMUM DEPTH NECESSARY TO CARRY OUT GRADING OR LANDSCAPING PLANS, IF IT WILL NOT IMPERIL THE SURVIVAL OF THE TREE. AERATION DEVICES MAY BE REQUIRED TO ENSURE THE TREE'S SURVIVAL.
- IF THE GRADE ADJACENT TO A PRESERVED TREE IS RAISED SUCH THAT IT COULD SLOUGH OR ERODE INTO THE TREE PROTECTION AREA, IT SHALL BE PERMANENTLY STABILIZED TO PREVENT SUFFOCATION OF THE ROOTS.
- THE APPLICANT SHALL NOT INSTALL AN IMPERVIOUS SURFACE WITHIN THE TREE PROTECTION AREA WITHOUT THE AUTHORIZATION OF THE PROJECT ARBORIST. THE PROJECT ARBORIST MAY REQUIRE SPECIFIC CONSTRUCTION METHODS AND/OR USE OF AERATION DEVICES TO ENSURE THE TREE'S SURVIVAL AND TO MINIMIZE THE POTENTIAL FOR ROOT INDUCED DAMAGE TO THE IMPERVIOUS SURFACE.
- TO THE GREATEST EXTENT PRACTICAL, UTILITY TRENCHES SHALL BE LOCATED OUTSIDE OF THE TREE PROTECTION AREA. THE PROJECT ARBORIST MAY REQUIRE THAT UTILITIES BE TUNNELED UNDER THE ROOTS OF TREES TO BE RETAINED IF THE PROJECT ARBORIST DETERMINES THAT TRENCHING WOULD SIGNIFICANTLY REDUCE THE CHANCES OF THE TREE'S SURVIVAL.
- TREES AND OTHER VEGETATION TO BE RETAINED SHALL BE PROTECTED FROM EROSION AND SEDIMENTATION. CLEARING OPERATIONS SHALL BE CONDUCTED SO AS TO EXPOSE THE SMALLEST PRACTICAL AREA OF SOIL FOR THE LEAST POSSIBLE AMOUNT OF TIME. SHRUBS, GROUND COVER, AND STUMPS SHALL BE MAINTAINED TO CONTROL EROSION, WHERE FEASIBLE. WHERE NOT FEASIBLE, APPROPRIATE EROSION CONTROL PRACTICES SHALL BE IMPLEMENTED.

**ADDITIONAL REQUIREMENTS:**

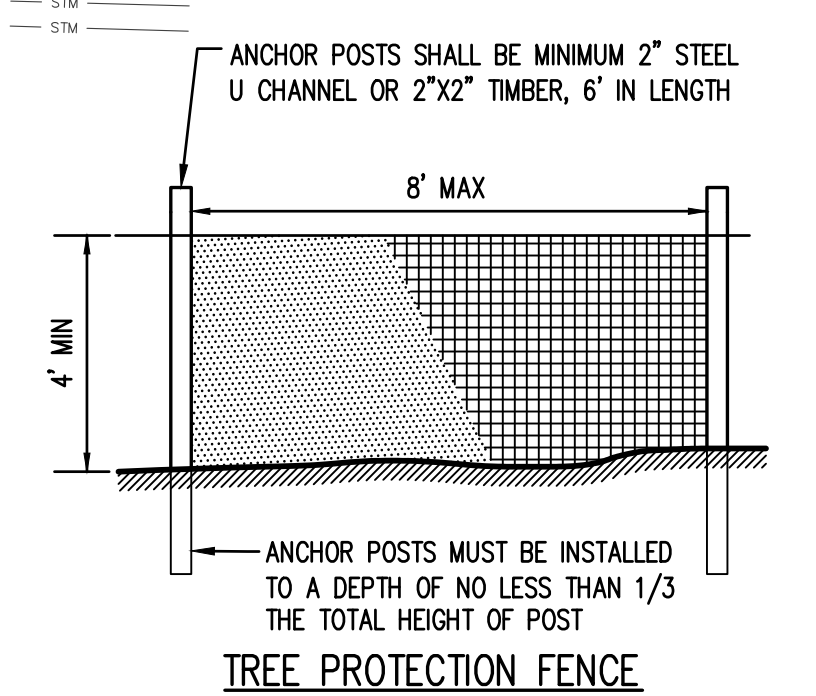
- THE PROJECT ARBORIST MAY REQUIRE ADDITIONAL TREE PROTECTION MEASURES WHICH ARE CONSISTENT WITH ACCEPTED URBAN FORESTRY PRACTICES.

**EXCAVATION WITHIN ASSUMED TREE ROOT ZONES:**

- EXCAVATION IN THE TOP 24 INCHES OF SOIL IN THE ASSUMED TREE ROOT ZONE SHOULD BEGIN AT THE EXCAVATION LINE THAT IS CLOSEST TO THE TREE.
- THE EXCAVATION SHOULD BE DONE BY HAND/SHOVEL OR WITH AN EXCAVATOR AND A PERSON WITH A SHOVEL, PRUNING SHEARS, AND A PRUNING SAW.
- IF DONE BY HAND, ALL ROOTS 1-INCH DIAMETER OR LARGER SHOULD BE PRUNED AT THE EXCAVATION LINE.
- IF DONE WITH AN EXCAVATOR (MOST LIKELY SCENARIO), THEN THE OPERATOR SHALL START THE CUT AT THE EXCAVATION LINE AND CAREFULLY "FEEL" FOR ROOTS/RESISTANCE. WHEN THERE IS RESISTANCE, THE PERSON WITH THE SHOVEL HAND DIGS AROUND THE ROOTS AND PRUNES THE ROOTS 1-INCH DIAMETER OR LARGER.
- THE EXCAVATOR IS TO REMAIN OFF OF THE TREE ROOTS TO BE PRESERVED AT ALL TIMES.
- ALL ROOTS SHALL BE CUT CLEANLY WITH PRUNING SHEARS OR A PRUNING SAW.
- THE PROJECT ARBORIST MUST BE ON SITE DURING ANY WORK WITHIN THE TREE PROTECTION AREA.

**PRUNING/TREE REMOVAL NOTES:**

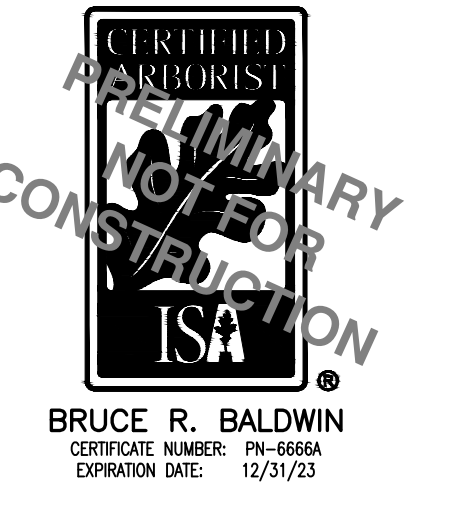
- THE CONTRACTOR SHALL PROVIDE AN ADEQUATE CREW OF PERSONNEL, EQUIPMENT, AND MATERIALS TO SAFELY AND EFFICIENTLY COMPLETE THE ASSIGNED WORK. EACH SUCH CREW SHALL INCLUDE AN INDIVIDUAL WHO SHALL BE DESIGNATED AS THE CREW SUPERVISOR, BE RESPONSIBLE FOR THE CREW'S ACTIVITIES, RECEIVE INSTRUCTION FROM THE OWNER OR THE OWNER'S REPRESENTATIVE, AND DIRECT THE CREW TO ACCOMPLISH SUCH WORK.
- WHENEVER A TREE, WHICH IS NOT SCHEDULED TO BE REMOVED, MUST BE TRIMMED OR PRUNED, THE CONTRACTOR SHALL ENSURE THAT SUCH TRIMMING AND PRUNING IS CARRIED OUT UNDER THE DIRECT SUPERVISION OF A CERTIFIED ARBORIST. ALL PRUNING AND TRIMMING SHALL BE PERFORMED IN ACCORDANCE WITH THE PROVISIONS OF ANSI A300 "STANDARD PRACTICES FOR TREE, SHRUB AND OTHER WOODY PLANT MAINTENANCE".
- UNLESS AS OTHERWISE DIRECTED BY THE OWNER, ROOT BALLS FROM TREES BEING REMOVED SHALL BE COMPLETELY REMOVED UNLESS THE ROOT REMOVAL CROSSES ONTO ADJACENT PROPERTIES OR WOULD COMPROMISE TREES BEING PRESERVED. IN THOSE CASES, THE STUMPS SHALL BE GROUND AS NECESSARY SO AS NOT TO CAUSE DAMAGE TO THE ROOT ZONES OF ADJACENT TREES TO BE PRESERVED ON THE SUBJECT PARCEL OR ADJUTING PARCELS. STUMPS NEAR PROPERTY LINES SHALL ALSO BE GROUND AS NECESSARY SO AS NOT TO CAUSE DISTURBANCE TO ADJACENT PARCELS.
- THE CONTRACTOR SHALL PERFORM ALL WORK IN ACCORDANCE WITH THE LATEST GOVERNMENTAL SAFETY REGULATIONS. ALL WORK SHALL BE PERFORMED IN STRICT ACCORDANCE WITH ANSI Z133.1 "PRUNING, TRIMMING, REPAIRING, MAINTAINING AND REMOVING TREES AND CUTTING BRUSH-SAFETY REQUIREMENTS" WITH SPECIAL EMPHASIS GIVEN TO THE REQUIREMENT THAT ONLY QUALIFIED LINE-CLEARANCE TREE TRIMMERS BE ASSIGNED TO WORK WHERE A POTENTIAL ELECTRICAL HAZARD EXISTS.
- THE CONTRACTOR SHALL MAKE ALL THE NECESSARY ARRANGEMENTS WITH ANY UTILITY THAT MUST BE PROTECTED OR RELOCATED IN ORDER TO ACCOMPLISH THE WORK. THE CONTRACTOR SHALL BE SOLELY RESPONSIBLE FOR THE PROTECTION OF THE OPERATING CONDITION OF ALL ACTIVE UTILITIES WITHIN THE AREA OF CONSTRUCTION AND SHALL TAKE ALL NECESSARY PRECAUTIONS TO AVOID DAMAGE TO EXISTING UTILITIES.
- ANY MATERIAL RESULTING FROM THE TRIMMING OR REMOVAL OF ANY TREES SHALL BECOME THE RESPONSIBILITY OF THE CONTRACTOR TO DISPOSE OF.
- HAZARDOUS TREE REPORTING: ANY PERSON ENGAGED IN TRIMMING OR PRUNING WHO BECOMES AWARE OF A TREE OF DOUBTFUL STRENGTH, THAT COULD BE DANGEROUS TO PERSONS AND PROPERTY, SHALL REPORT SUCH TREE(S) TO THE OWNER OR THE OWNER'S REPRESENTATIVE. SUCH TREES SHALL INCLUDE THOSE THAT ARE OVER MATURE, DISEASED, OR SHOWING SIGNS OF DECAY OR OTHER STRUCTURAL WEAKNESS.
- TREES DETERMINED TO BE A HAZARD SHALL BE REMOVED AS SOON AS POSSIBLE.
- DAMAGES: ANY DAMAGE CAUSED BY THE CONTRACTOR, INCLUDING, BUT NOT LIMITED TO, BROKEN SIDEWALK, CURB, RUTTED LAWN, BROKEN SHUT-OFFS, WIRE DAMAGE, BUILDING DAMAGE, STREET DAMAGE, ETC., WILL BE REPAIRED OR REPLACED IN A TIMELY MANNER, TO THE OWNER'S SATISFACTION, AND ALL COSTS PAID BY THE CONTRACTOR.
- ANY BRUSH CLEARING REQUIRED WITHIN THE TREE PROTECTION AREA SHALL BE ACCOMPLISHED WITH HAND OPERATED EQUIPMENT.
- TREES TO BE REMOVED SHALL BE FELLED SO AS TO FALL AWAY FROM OPTIMAL TREE ROOT PROTECTION ZONES AND TO AVOID PULLING AND BREAKING OF ROOTS TO REMAIN. DIRECTIONAL FELLING OF TREES SHALL BE USED TO AVOID DAMAGE TO TREES DESIGNATED FOR RETENTION.
- ALL DOWNED BRUSH AND TREES SHALL BE REMOVED FROM THE TREE PROTECTION AREA EITHER BY HAND OR WITH EQUIPMENT STAGED OUTSIDE OF THE TREE PROTECTION AREA. EXTRACTION SHALL OCCUR BY LIFTING THE MATERIAL OUT, NOT BY SKIDDING IT ACROSS THE GROUND.
- IF TEMPORARY HAIL OR ACCESS ROADS MUST PASS OVER TREE PROTECTION AREA, A ROADBED OF STEEL PLATES, OR 6 INCHES OF MULCH, OR 6 INCHES OF GRAVEL SHALL BE PLACED TO PREVENT SOIL COMPACTION IF DETERMINED NECESSARY BY THE PROJECT ARBORIST. THE ROADBED MATERIAL SHALL BE REPLISHED AS NECESSARY TO MAINTAIN A 6-INCH DEPTH.
- PRUNING: THE CONTRACTOR SHALL CONSULT WITH THE PROJECT ARBORIST PRIOR TO ANY PRUNING ACTIVITIES NECESSARY FOR CONSTRUCTION ACTIVITIES. ALL PRUNING ACTIVITIES SHALL BE PERFORMED IN ACCORDANCE WITH ANSI A300 PRUNING STANDARDS. PRUNING SHALL BE COMPLETED PRIOR TO THE START OF CONSTRUCTION ACTIVITIES.
- CUT BRANCHES AND ROOTS WITH SHARP PRUNING INSTRUMENTS THAT DO NOT CHOP OR TEAR.
- FENCING SHALL BE INSTALLED PRIOR TO ANY CONSTRUCTION ACTIVITIES, INCLUDING, BUT NOT LIMITED TO CLEARING, GRADING, EXCAVATION, OR DEMOLITION WORK, AND SHALL BE REMOVED ONLY AFTER THE COMPLETION OF ALL CONSTRUCTION ACTIVITIES, INCLUDING LANDSCAPING AND IRRIGATION INSTALLATION.
- TREE PROTECTION FENCING SHALL BE FLUSH WITH THE INITIAL UNDISTURBED GRADE.



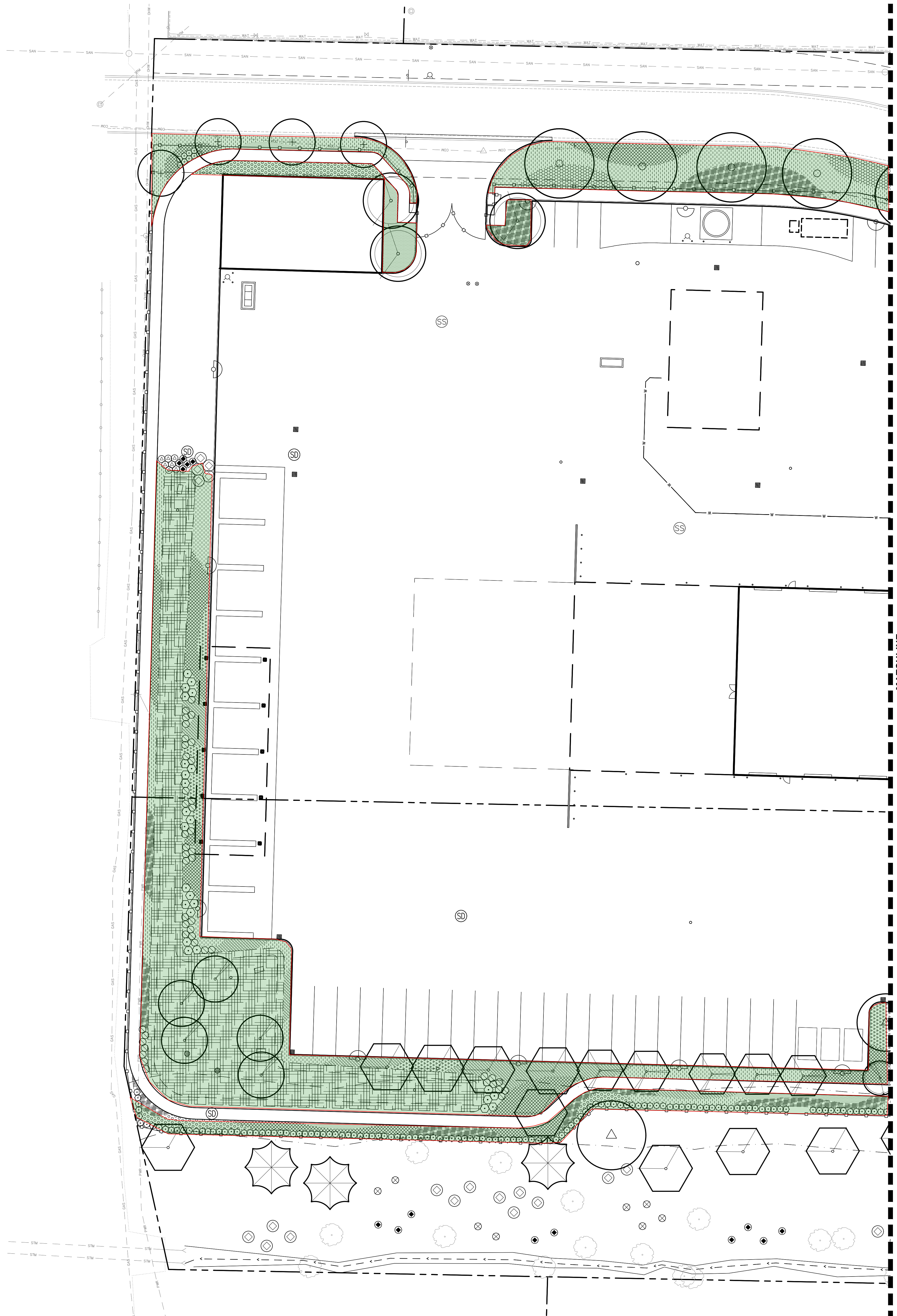
- NOTES:**
- CHAIN LINK FENCE FOR TREE PROTECTION DEVICE OR APPROVED EQUAL.
  - AVOID DAMAGE TO CRITICAL ROOT ZONE. DO NOT DAMAGE OR SEVER LARGE ROOTS WHEN INSTALLING POSTS.
  - DEVICE SHALL BE MAINTAINED THROUGHOUT CONSTRUCTION.

**LEGEND**

EXISTING GROUND CONTOUR (1 FT)	---	149
EXISTING GROUND CONTOUR (5 FT)	---	150
FINISHED GRADE CONTOUR (1 FT)	---	149
FINISHED GRADE CONTOUR (5 FT)	---	150
EXISTING CONIFEROUS TREE	★	
EXISTING DECIDUOUS TREE	○	
TREE REMOVAL	✕	
TREE PROTECTION FENCE (TREE PROTECTION AREA)	~	
ASSUMED TREE ROOT ZONE (1-FT RADIUS PER 1-IN OF DBH)	○	







### PLANTING SCHEDULE

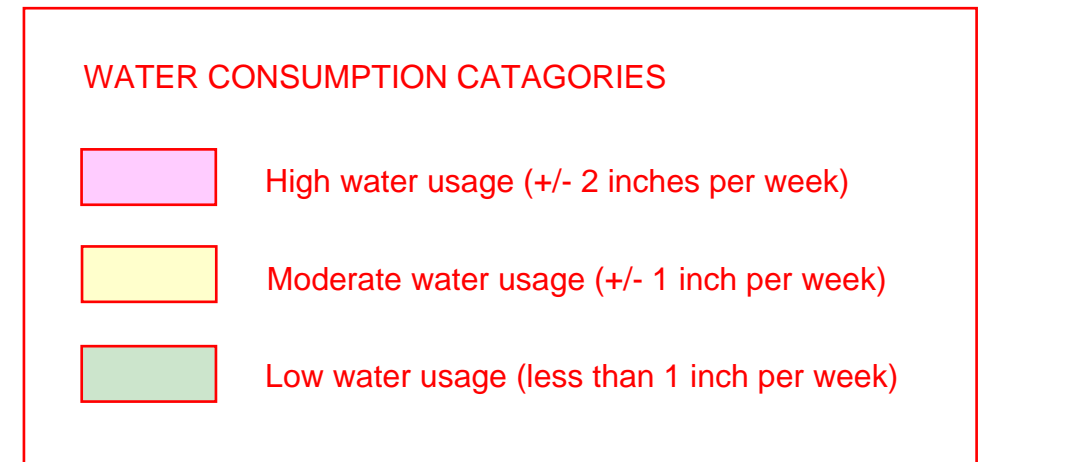
TREES		16	17
11	Existing tree to remain		
14	Quercus frainetto - Hungarian Oak 2" CAL, B&B, MULTI-STEM, WELL BRANCHED		
19	Cercidiphyllum japonicum - Katsura Tree 10' HT, B&B, MULTI-STEM, WELL BRANCHED		
8	Platanus x acarifolia - London Planetree 'Columbia' 3" CAL, B&B, WELL BRANCHED		
8	Nyssa sylvatica - Black Tupelo 2" CAL, B&B, WELL BRANCHED		
7	Quercus x bimundorum 'Crimson Spire' - Crimson Spire Oak 2" CAL, B&B, WELL BRANCHED, LIMBED TO 8"		
13	Quercus garryana - Oregon White Oak 3" CAL, B&B, WELL BRANCHED, LIMBED TO 8"		
5	Quercus rubra - Red Oak 3" CAL, B&B, WELL BRANCHED, LIMBED TO 8"		
4	Tilia cordata - Little Leaf Linden 3" CAL, B&B, WELL BRANCHED, LIMBED TO 8"		
5	Frangula purshiana - Cascara 2" CAL, B&B, WELL BRANCHED, LIMBED TO 8"		
6	Chamaecyparis nootkatensis 'Pendula' - Weeping Alaskan Cedar 8' HT, B&B, WELL BRANCHED, LIMBED TO 8"		
11	Pseudotsuga menziesii - Douglas Fir 8' HT, B&B, WELL BRANCHED, LIMBED TO 8"		
6	Tsuga heterophylla - Western Hemlock 8' HT, B&B, WELL BRANCHED, LIMBED TO 8"		
14	Acer macrophylla - Big Leaf Maple 2" CAL, B&B, WELL BRANCHED, LIMBED TO 8"		
SHRUBS		16	17
32	Pieris japonica 'Flaming Silver' - Flaming Silver Pieris 5 GAL, CONT., FULL PLANTS, 36" O.C.		
118	Cornus sericea 'Kelsey' - Kelsey Redosier Dogwood 2 GAL, CONT., FULL PLANTS, 24" O.C.		
94	Vaccinium ovatum - Evergreen Huckleberry 5 GAL, CONT., FULL PLANTS, 36" O.C.		
219	Mahonia aquifolium - Tall Oregon Grape 2 GAL, CONT., FULL PLANTS, 36" O.C.		
21	Escallonia x 'Newport Dwarf' - Compact Escallonia 2 GAL, CONT., FULL PLANTS, 36" O.C.		
96	Rubus spectabilis - Salmonberry 2 GAL, CONT., FULL PLANTS, 36" O.C.		
23	Myrica californica - Pacific Waxmyrtle 5 GAL, CONT., FULL PLANTS, 36" O.C.		
54	Choisya ternata 'Sundance' - Mexican Orange 2 GAL, CONT., FULL PLANTS, 36" O.C.		
19	Physocarpus opulifolius - Pacific Ninebark 2 GAL, CONT., FULL PLANTS, 36" O.C.		
30	Viburnum edule - Highbush Cranberry 2 GAL, CONT., FULL PLANTS, 36" O.C.		

GRASSES		16	17
695	Carex oshimensis 'Everillo' - Japanese Sedge 1 GAL, CONT., FULL PLANTS, 24" O.C.		
971	Carex tumulicola - Foothill Sedge 1 GAL, CONT., FULL PLANTS, 24" O.C.		
2,393	Deschampsia cespitosa - Tufted Hair Grass 1 GAL, CONT., FULL PLANTS, 24" O.C.		
2,407	Festuca glauca 'Elijah Blue' - Blue Fescue 1 GAL, CONT., FULL PLANTS, 12" O.C.		
773	Schizachyrium scoparium 'Standing Ovation' - Little Bluestem 1 GAL, CONT., FULL PLANTS, 24" O.C.		
3,215	Setaria autumnalis - Autumn Moor Grass 1 GAL, CONT., FULL PLANTS, 18" O.C.		
115	Panicum virgatum 'Dallas Blues' - Dallas Blues Switch Grass 5 GAL, CONT., FULL PLANTS, SPACING AS SHOWN		
19	Pennisetum alopecuroides 'Karley Rose' - Fountain Grass 1 GAL, CONT., FULL PLANTS, 36" O.C.		
48	Calamagrostis acutiflora 'Karl Forster' - Feather Reed Grass 2 GAL, CONT., FULL PLANTS, 24" O.C.		

GROUND COVER		16	17
1,179	Mahonia repens - Creeping Oregon Grape 1 GAL, CONT., FULL PLANTS, 24" O.C.		
1,400	Epimedium x rubrum - Bishops Hat 1 GAL, CONT., FULL PLANTS, 18" O.C.		
378	Gaitheria shallon - Salal 1 GAL, CONT., FULL PLANTS, 36" O.C.		
18	Cotoneaster dammeri 'Mooncreeper' - Bearberry Cotoneaster 2 GAL, CONT., FULL PLANTS, 36" O.C.		

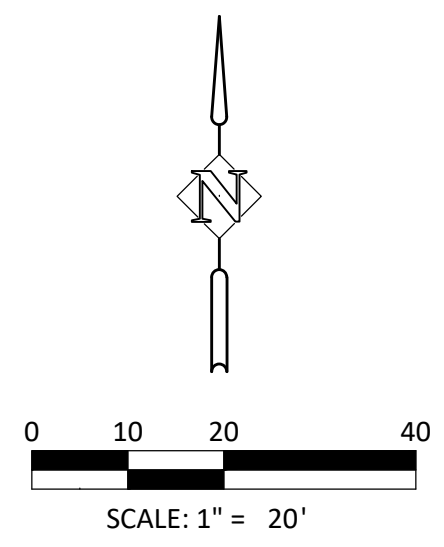
STORMWATER TREATMENT AREAS	
345	Juncus patens - Spreading Rush
345	Carex obnupta - Slough Sedge
345	Carex densa - Dense Sedge
345	Juncus ensifolius - Dagger-Leaf Rush

SEED MIXES			
1,356 SF	SUNIMARK SEEDS Eco Lawn Plus	% PLS	LBS OF PLS/ACRE
	Lolium perenne	40	118.8
	Festuca brevipila	25	36.9
	Achillea millefolium	5	5.1
	Lupinus bicolor	2	5.1
	Trifolium repens	5	6.1
	Trifolium fragiferum	5	12.3
	Escholia californica	5	12.3
	Lobularia maritima	5	6.1
	Leucantherum maximum, dwarf	3	2.0
	Clarkia amonea	5	3.1
	TOTAL		207.96

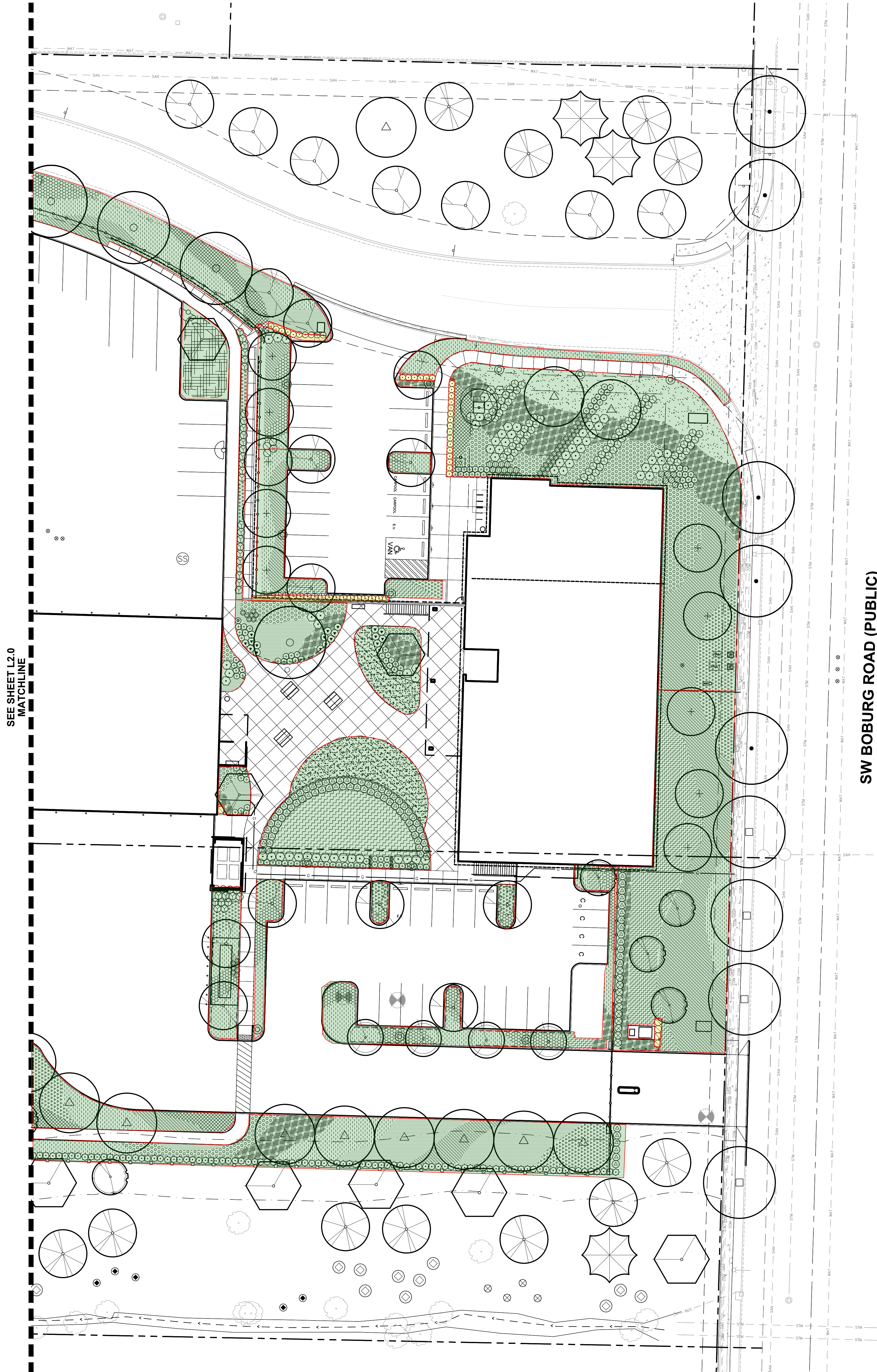


### PLANTING NOTES

- ALL CONSTRUCTION SHALL BE PERFORMED IN ACCORDANCE WITH CURRENT CITY OF WILSONVILLE STANDARDS AND THE OREGON UNIFORM BUILDING CODES.
- INSTALL EROSION CONTROL SYSTEMS IN ACCORDANCE WITH OREGON CITY STANDARDS PRIOR TO SITE WORK AND LANDSCAPE INSTALLATION.
- MARK AND PROTECT ALL UTILITIES, SITE FEATURES, AND VEGETATION TO REMAIN IN PLACE.
- REMOVE EXISTING TOP SOILS AND STOCKPILE PER SPECIFICATIONS. AMEND TOP SOILS IN ACCORDANCE WITH SOILS REPORT RECOMMENDATIONS AND PROJECT SPECIFICATIONS PRIOR TO PLACEMENT IN PLANTING AREAS.
- ALL PLANTING BEDS TO RECEIVE 18" DEPTH TOP SOIL.
- ROOT BARRIER TO BE INSTALLED AT ALL TREES ADJACENT TO PAVED AREAS - SEE PLANTING PLAN AND DETAIL.
- PLANT MATERIAL INSTALLED SHALL CONFORM IN SIZE AND GRADE TO THE "AMERICAN STANDARD FOR NURSERY STOCK" CURRENT EDITION.
- LANDSCAPING WILL NOT INCLUDE MULCH AS GROUND COVER EXCEPT UNDERNEATH PLANTS AT MATURITY AND WITHIN 2' OF THE BASE OF TREES.
- THE QUANTITIES OF PLANT MATERIALS SHALL BE AS DETERMINED BY THE CONTRACTOR IN ACCORDANCE WITH THE SPECIFIED SPACING OR LOCATION ON THE PLAN. MATERIAL QUANTITIES SHOWN ON PLAN ARE FOR CONTRACTOR CONVENIENCE ONLY AND SHALL BE VERIFIED BY THE CONTRACTOR PRIOR TO INSTALLATION. SURPLUS OR SHORTAGES OF PLANT QUANTITIES SHALL BE THE RESPONSIBILITY OF THE CONTRACTOR.
- NEW PLANTING INSTALLATION SHALL INCLUDE INSTALLATION OF AUTOMATIC IRRIGATION SYSTEM.
- LANDSCAPE CONTRACTOR SHALL MAINTAIN PLANTINGS FOR THE DURATION OF THE 1 YEAR WARRANTY PERIOD AFTER SUBSTANTIAL COMPLETION AND GUARANTEE ALL PLANTINGS TO BE IN SATISFACTORY AND VIGOROUS HEALTH. PROVIDE MAINTENANCE SCHEDULE PER SPECIFICATIONS.



THESE DRAWINGS ARE THE ORIGINAL UNPUBLISHED WORK OF THE ARCHITECT AND MAY NOT BE DUPLICATED OR USED WITHOUT THE WRITTEN CONSENT OF THE ARCHITECT.



SEE SHEET L2.0  
MATCHLINE

SW BOBERG ROAD (PUBLIC)

### PLANTING SCHEDULE

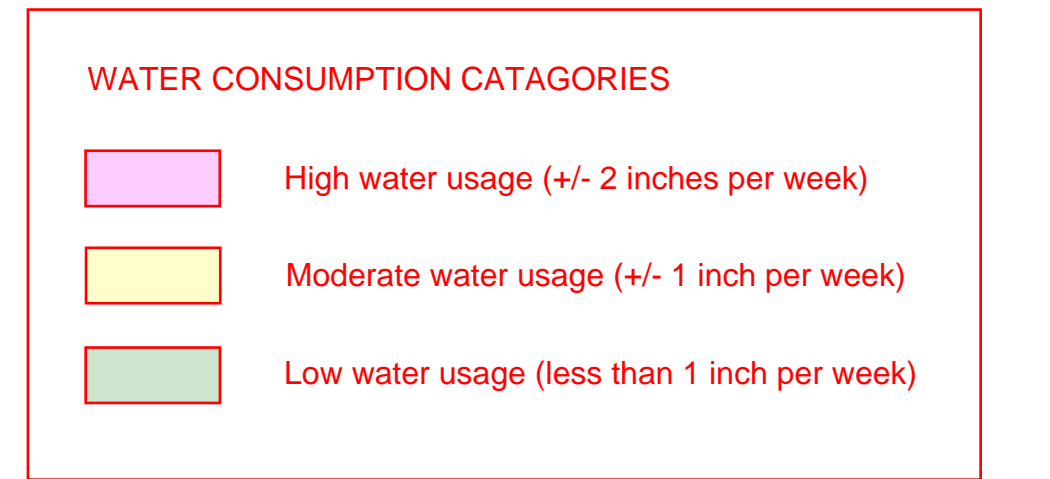
TREES	
11	Existing tree to remain
14	<i>Quercus frainetto</i> - Hungarian Oak 2" CAL, B&B, MULTI-STEM, WELL BRANCHED
19	<i>Cercidiphyllum japonicum</i> - Katsura Tree 10' HT, B&B, MULTI-STEM, WELL BRANCHED
8	<i>Platanus x acerifolia</i> - London Planetree 'Columbia' 3" CAL, B&B, WELL BRANCHED
8	<i>Myrica sylvatica</i> - Black Tupelo 2" CAL, B&B, WELL BRANCHED
7	<i>Quercus x bimundorum</i> 'Crimson Spire' - Crimson Spire Oak 2" CAL, B&B, WELL BRANCHED, LIMBED TO 8'
13	<i>Quercus garryana</i> - Oregon White Oak 3" CAL, B&B, WELL BRANCHED, LIMBED TO 8'
5	<i>Quercus rubra</i> - Red Oak 3" CAL, B&B, WELL BRANCHED, LIMBED TO 8'
4	<i>Tilia cordata</i> - Little Leaf Linden 3" CAL, B&B, WELL BRANCHED, LIMBED TO 8'
5	<i>Frangula purshiana</i> - Cascara 2" CAL, B&B, WELL BRANCHED, LIMBED TO 8'
6	<i>Chamaecyparis nootkatensis</i> 'Pendula' - Weeping Alaskan Cedar 8' HT, B&B, WELL BRANCHED, LIMBED TO 8'
11	<i>Pseudotsuga menziesii</i> - Douglas Fir 8' HT, B&B, WELL BRANCHED, LIMBED TO 8'
6	<i>Tsuga heterophylla</i> - Western Hemlock 8' HT, B&B, WELL BRANCHED, LIMBED TO 8'
14	<i>Acer macrophylla</i> - Big Leaf Maple 2" CAL, B&B, WELL BRANCHED, LIMBED TO 8'
SHRUBS	
32	<i>Pieris japonica</i> 'Flaming Silver' - Flaming Silver Pieris 5 GAL, CONT., FULL PLANTS, 36" O.C.
118	<i>Cornus sericea</i> 'Kelsey' - Kelsey Redosier Dogwood 2 GAL, CONT., FULL PLANTS, 24" O.C.
94	<i>Vaccinium ovatum</i> - Evergreen Huckleberry 5 GAL, CONT., FULL PLANTS, 36" O.C.
219	<i>Mahonia aquifolium</i> - Tall Oregon Grape 2 GAL, CONT., FULL PLANTS, 36" O.C.
21	<i>Escallonia x 'Newport Dwarf'</i> - Compact Escallonia 2 GAL, CONT., FULL PLANTS, 36" O.C.
96	<i>Rubus spectabilis</i> - Salmonberry 2 GAL, CONT., FULL PLANTS, 36" O.C.
23	<i>Myrica californica</i> - Pacific Waxmyrtle 5 GAL, CONT., FULL PLANTS, 36" O.C.
54	<i>Choisya ternata</i> 'Sundance' - Mexican Orange 2 GAL, CONT., FULL PLANTS, 36" O.C.
19	<i>Physocarpus opulifolius</i> - Pacific Ninebark 2 GAL, CONT., FULL PLANTS, 36" O.C.
30	<i>Viburnum edule</i> - Highbush Cranberry 2 GAL, CONT., FULL PLANTS, 36" O.C.

GRASSES	
695	<i>Carex oshimensis</i> 'Everillo' - Japanese Sedge 1 GAL, CONT., FULL PLANTS, 24" O.C.
971	<i>Carex tumulicola</i> - Foothill Sedge 1 GAL, CONT., FULL PLANTS, 24" O.C.
2,393	<i>Deschampsia cespitosa</i> - Tufted Hair Grass 1 GAL, CONT., FULL PLANTS, 24" O.C.
2,407	<i>Festuca glauca</i> 'Elijah Blue' - Blue Fescue 1 GAL, CONT., FULL PLANTS, 12" O.C.
773	<i>Schizachyrium scoparium</i> 'Standing Ovation' - Little Bluestem 1 GAL, CONT., FULL PLANTS, 24" O.C.
3,215	<i>Setaria autumnalis</i> - Autumn Moor Grass 1 GAL, CONT., FULL PLANTS, 18" O.C.
115	<i>Panicum virgatum</i> 'Dallas Blues' - Dallas Blues Switch Grass 5 GAL, CONT., FULL PLANTS, SPACING AS SHOWN
19	<i>Pennisetum alopecuroides</i> 'Karl Rose' - Fountain Grass 1 GAL, CONT., FULL PLANTS, 36" O.C.
48	<i>Calamagrostis acutiflora</i> 'Karl Forster' - Feather Reed Grass 2 GAL, CONT., FULL PLANTS, 24" O.C.

GROUND COVER	
1,179	<i>Mahonia repens</i> - Creeping Oregon Grape 1 GAL, CONT., FULL PLANTS, 24" O.C.
1,400	<i>Epimedium x rubrum</i> - Bishops Hat 1 GAL, CONT., FULL PLANTS, 18" O.C.
378	<i>Gaultheria shallon</i> - Salal 1 GAL, CONT., FULL PLANTS, 36" O.C.
18	<i>Cotoneaster dammeri</i> 'Mooncreeper' - Bearberry Cotoneaster 2 GAL, CONT., FULL PLANTS, 36" O.C.

STORMWATER TREATMENT AREAS	
345	<i>Juncus patens</i> - Spreading Rush
345	<i>Carex obnupta</i> - Slough Sedge
345	<i>Carex densa</i> - Dense Sedge
345	<i>Juncus ensifolius</i> - Dagger-Leaf Rush

SEED MIXES			
1,356 SF	SUNIMARK SEEDS Eco Lawn Plus	% PLS	LBS OF PLS/ACRE
	<i>Lolium perenne</i>	40	118.8
	<i>Festuca brevipila</i>	25	36.9
	<i>Achillea millefolium</i>	5	5.1
	<i>Lupinus bicolor</i>	2	5.1
	<i>Trifolium repens</i>	5	6.1
	<i>Trifolium fragiferum</i>	5	12.3
	<i>Escholia californica</i>	5	12.3
	<i>Lobularia maritima</i>	5	6.1
	<i>Leucantherum maximum, dwarf</i>	3	2.0
	<i>Clarkia amonea</i>	5	3.1
	TOTAL		207.96



### PLANTING NOTES

- ALL CONSTRUCTION SHALL BE PERFORMED IN ACCORDANCE WITH CURRENT CITY OF WILSONVILLE STANDARDS AND ADOPTED BUILDING CODES.
- INSTALL EROSION CONTROL SYSTEMS IN ACCORDANCE WITH CITY OF WILSONVILLE STANDARDS PRIOR TO SITE WORK AND LANDSCAPE INSTALLATION.
- MARK AND PROTECT ALL UTILITIES, SITE FEATURES, AND VEGETATION TO REMAIN IN PLACE.
- REMOVE EXISTING TOP SOILS AND STOCKPILE PER SPECIFICATIONS. AMEND TOP SOILS WITH MINIMUM 4" COMPOST AND AMENDMENTS PER SOILS REPORT RECOMMENDATIONS AND PROJECT SPECIFICATIONS PRIOR TO PLACEMENT IN PLANTING AREAS.
- ALL PLANTING BEDS TO RECEIVE 18" DEPTH TOP SOIL.
- ROOT BARRIER TO BE INSTALLED AT ALL TREES ADJACENT TO PAVED AREAS - SEE PLANTING PLAN AND DETAIL.
- PLANT MATERIAL INSTALLED SHALL CONFORM IN SIZE AND GRADE TO THE "AMERICAN STANDARD FOR NURSERY STOCK" CURRENT EDITION.
- LANDSCAPING WILL NOT INCLUDE MULCH AS GROUND COVER EXCEPT UNDERNEATH PLANTS AT MATURITY AND WITHIN 2' OF THE BASE OF TREES.
- THE QUANTITIES OF PLANT MATERIALS SHALL BE AS DETERMINED BY THE CONTRACTOR IN ACCORDANCE WITH THE SPECIFIED SPACING OR LOCATION ON THE PLAN. MATERIAL QUANTITIES SHOWN ON PLAN ARE FOR CONTRACTOR CONVENIENCE ONLY AND SHALL BE VERIFIED BY THE CONTRACTOR PRIOR TO INSTALLATION. SURPLUS OR SHORTAGES OF PLANT QUANTITIES SHALL BE THE RESPONSIBILITY OF THE CONTRACTOR.
- NEW PLANTING INSTALLATION SHALL INCLUDE INSTALLATION OF AUTOMATIC IRRIGATION SYSTEM.
- LANDSCAPE CONTRACTOR SHALL MAINTAIN PLANTINGS FOR THE DURATION OF THE 1 YEAR WARRANTY PERIOD AFTER SUBSTANTIAL COMPLETION AND GUARANTEE ALL PLANTINGS TO BE IN SATISFACTORY AND VIGOROUS HEALTH. PROVIDE MAINTENANCE SCHEDULE PER SPECIFICATIONS.

LAND USE SUBMITTAL 02/12/2021

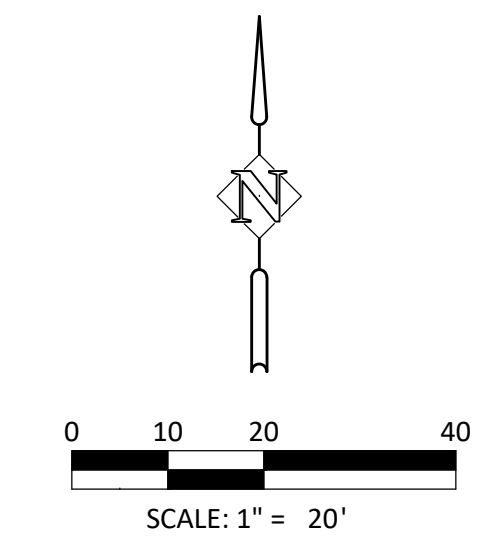
ISSUE DATE

Drawing:

**PLANTING PLAN - EAST**

Sheet No:

**L2.1**



THESE DRAWINGS ARE THE ORIGINAL UNPUBLISHED WORK OF THE ARCHITECT AND MAY NOT BE DUPLICATED OR USED WITHOUT THE WRITTEN CONSENT OF THE ARCHITECT.