

From The Director's Office:

The year 2021 started with the Presidents' Day winter storm in February and ended with a Holiday snow and ice event in late December giving the Public Works staff another occasion to implement our [Snow and Ice Response Plan](#).

In preparation for the inclement weather staff readied the deicer equipment, attached the snow plow blade to a truck and prepared the sanding machine for use. Anticipating the arrival of snow on the afternoon of December 25, three work teams were created and were put on rotation to provide 24 hours a day snow clearing and sanding services during the storm.

Over the next several days and nights staff applied deicer to the roadway and spread sand along areas of concern to provide better traction for vehicles. By Tuesday evening (Dec. 28), the weather cleared and staff resumed their normal work schedules.

A big thank you to the Public Works staff who provided their services 24 hours a day to ensure our community had safe travel routes.

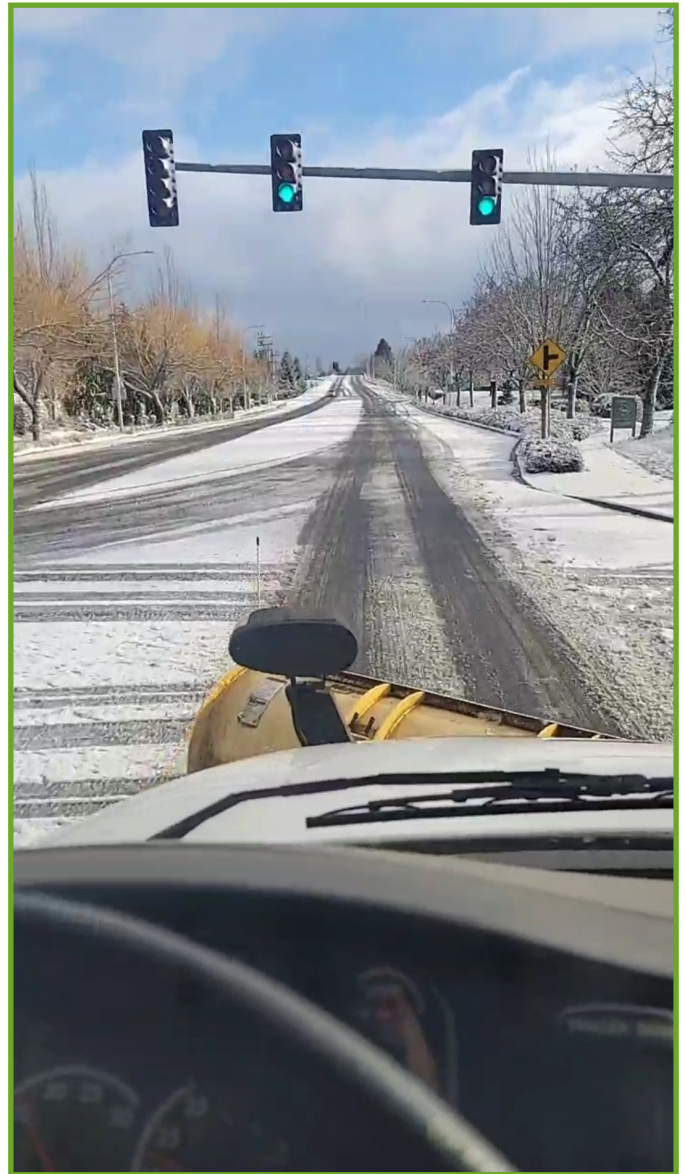


Sanding equipment on Elligsen Road

From the Director's Office, continued



Deicing the roads



View from the snow plow

**Best Regards,
Delora Kerber,
Public Works Director**

Utilities—Water

Large Meter Calibration

The accuracy of the turnout meters was verified this month. A “turnout” is where the water system transitions from the large transmission main coming from the treatment plant into the distribution piping through a pressure reducing valve. There are four turnouts in the system, each with a flow meter. A contractor verifies the accuracy of these flow meters annually using an ultrasonic flow meter clamped onto the pipe. It measures flow by transmitting and receiving a burst of ultrasound between two transducers and measuring the transit time. The ultrasonic meter readings are then compared to the turnout meter readings to determine accuracy.



Measuring flow with ultrasonic flowmeter

Control Valve Training

One staff member attended an all-day control valve training. This detailed training covered topics such as valve features and functions, pilot systems, reading pilot schematics, troubleshooting valves, and preventative maintenance. Operators practiced their skills on a simulator for hands-on experience.



Control valve training demonstration setup

Utilities—Wastewater

Manhole Repair on 95th Avenue

Staff completed repairs on damaged concrete on 95th Avenue surrounding a manhole. They cut and dug out the damaged section with a jack hammer, back filled and compacted the hole before pouring new concrete.



Sinkhole Repair at Weideman Well

The Wastewater crew also tackled a repair of a sinkhole that had developed at the Wiedeman Well. Upon investigating the sinkhole, it was discovered that the fence surrounding the well had a corner fencepost placed directly on top of a storm pipe. The top of the pipe had collapsed, creating the hole. The crew excavated the pipe and made a spot repair to resolve problem



Excavating the sinkhole

Facilities

Welcome, David and Taylor!

We have new faces on our janitorial staff! We welcome David Meine and Taylor Michael to the Facilities Janitorial crew.



David Meine

David came to us from a large home improvement store, where he honed his customer service skills and has a background in the Chemistry field.



Taylor Michael

Taylor also joins the team with a background in cleaning and customer service working as a customer service representative at a convenience store.

David and Taylor have joined forces with Nick Simonton to tackle the daunting task of cleaning the nearly 100,000 square feet of the City's facilities. Both, David and Taylor, have hit the ground running and are making a noticeable difference in the cleanliness of our buildings.

Facilities cont.

Library Landscape Refresh

The team used a mini excavator and swaploader to remove the stumps in the raised landscape bed by the Library's main entrance. The two redbuds were unfortunate casualties of the ice storm in February. Our Maintenance Specialist Daniel Morena, known for his whimsical mowing patterns and detailed landscaping skills, will put his artistic touch to the space this spring.



Working at the Library entrance



Digging in the raised bed

Snow Removal at City Facilities

As the winter weather rolled in, staff worked to quickly remove the snow from sidewalks and apply ice melt to establish safe access to City buildings. Facilities staff also assisted the Roads crew with the sanding and deicing schedule, including over the holiday weekend. A huge “thank you” to our staff for all their hard work to keep our roads clear!



Public Works parking lot— a winter wonderland

Roads & Stormwater

Falling Star (almost)

High winds dislodged the star on top of the holiday tree on Wilsonville Road at Boones Ferry Road. It presented a potential safety hazard to traffic below. Staff were not able to locate a bucket truck to complete the job. Tualatin Valley Fire and Rescue (TVF&R) kindly brought their ladder truck and assisted us with removal.



Thanks to TVF&R for their assistance!

Versatile Swaploader

Crews prep ahead for winter weather each year. Our snow event response equipment includes a five yard dump truck outfitted with a plow and sander and an F350 swaploader truck with a plow and swappable beds for sanding and deicing. Deicer is laid down on dry roadways in anticipation of freezing conditions and after plowing as weather permits. During the recent snow event, the swaploader truck was crucial for keeping snow routes, the major collector and arterial roads, clear with good traction.



Our winter weather all-star—the swaploader!