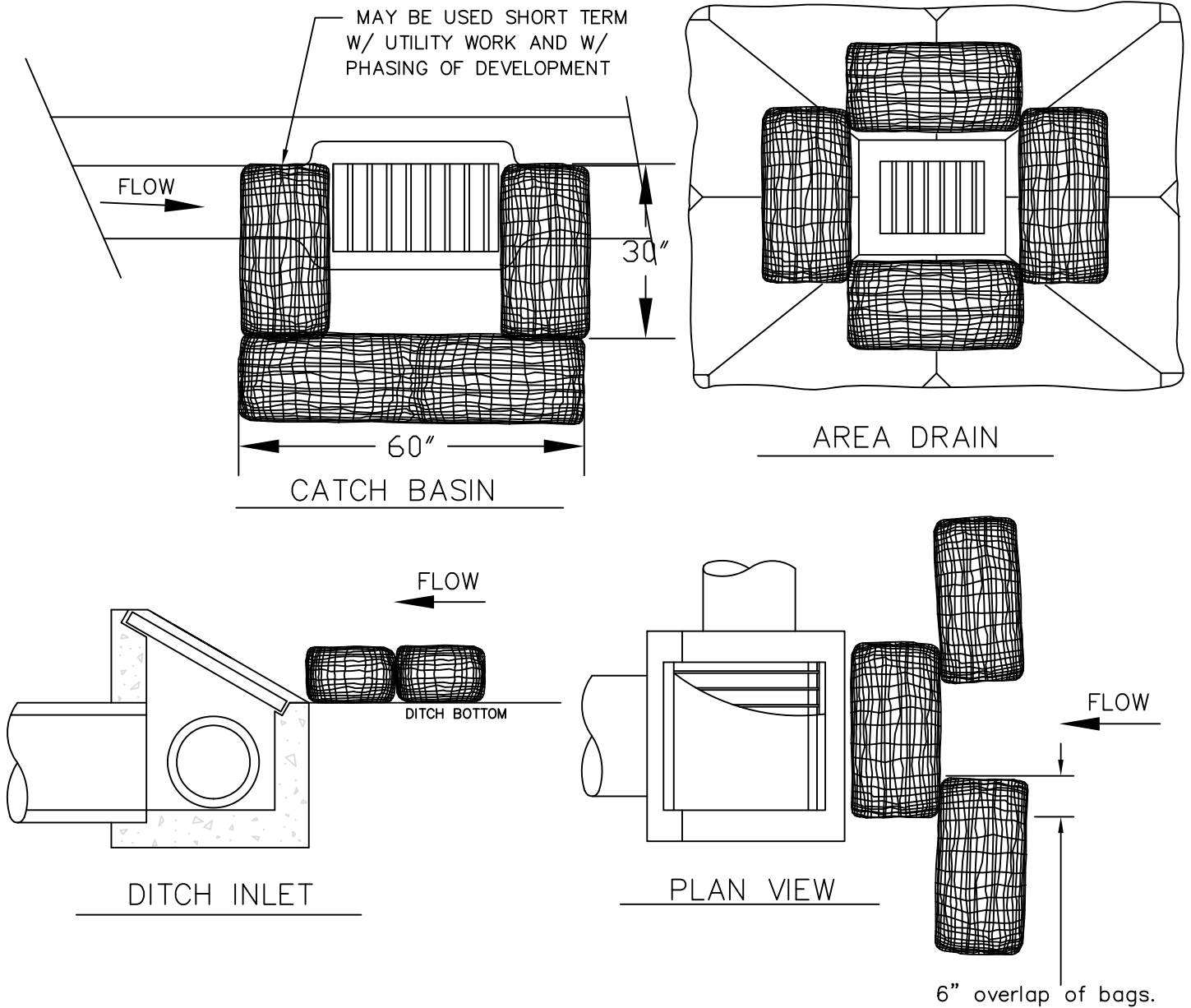


This Detail Drawing may not be altered or changed in any manner except by the City Engineer. It is the responsibility of the user to acquire the most current version.



Notes:

1. ADDITIONAL MEASURES MUST BE CONSIDERED DEPENDING ON SOIL TYPES.
2. BIO-FILTER BAGS SHOULD BE STAKED WHERE APPLICABLE USING (2) 1" X 2" WOODEN STAKES OR APPROVED EQUAL PER BAG OR AREA DRAIN.
3. WHEN USING 30" BIO-BAGS TO PROTECT A CATCH BASIN YOU MUST HAVE AT LEAST 4 BAGS AND THEY SHALL BE OVERLAPPED BY A MINIMUM OF 6".

Inlet Protection Type 4

DRAWING NUMBER: S-2126

DRAWN BY: SR

SCALE: N.T.S.

FILE NAME: S-2126.dwg

APPROVED BY: NK

DATE: 9/17/14

CITY OF  
WILSONVILLE



PUBLIC WORKS STANDARDS