



**Wilsonville Parks and Recreation Advisory Board
Parks and Recreation Admin Building
June 28, 2018, 4:30pm
Meeting Agenda**

- 4:30 PM** I. Call to Order
- i. Roll Call
 - ii. Approval of Minutes: May 24, 2018
- 4:35 PM** II. Citizen Input
- 4:40 PM** III. Frog Pond Community Park: Review Final Conceptual Design – AKS Engineering
- 5:00 PM** IV. Boones Ferry Park Master Plan: Review Final Conceptual Design – Staff
- 5:30 PM** V. Staff Report – All
- 5:35 PM** VI. Board Comments
- 5:45 PM** VII. Adjourn

Next Meeting –
Thursday, October 11, 2018
6:00 PM
Wilsonville City Hall

Assistive Listening Devices (ALD) are available for persons with impaired hearing and can be scheduled for this meeting if required. The city will endeavor to provide services, without cost, if requested at least 48 hours prior to the meeting. To obtain services, please call 503-570-1530.

Parks and Recreation Advisory Board Meeting Action Minutes
May 24, 2018

Advisory Board members present included:

Steve Benson
Jim Barnes
Diana Cutaia (left at 5:42pm)
Ken Rice (left at 5:36pm)
Denise Downs
David Davis (arrived at 5:42pm)

Staff present included:

Ahsamon Ante-Marandi, Administrative Assistant
Erica Behler, Recreation Coordinator
Mike McCarty, Parks and Recreation Director
Brian Stevenson, Program Manager
Kerry Rappold, Natural Resources Program Manager

AGENDA ITEM	ACTIONS
CALLED TO ORDER	4:31 p.m.
<u>Public Comment</u>	A. None
<u>Agenda</u>	
A. Minutes	A. Minutes were approved with a request to amend the board goals by removing names.
B. Bee City USA Presentation	B. Kerry Rappold gave a presentation regarding Wilsonville's Bee City designation, and the Backyard Habitat Certification program.
C. History of Skatepark Development in Wilsonville	C. Board member Jim Barnes presented a history on skatepark development in Wilsonville. The Board briefly discussed priority and opportunities within the community regarding a new skatepark.
D. Frog Pond Community Park Presentation	D. Chuck Gregory and Mimi Doukas, of AKS Engineering, presented two draft plans of Frog Pond Community Park and solicited feedback from the Board. The Board preferred Park Concept 1 with the following comments: (1) increase buffer between the fields and (2) add a skate spot and a half-court basketball court.
<u>Staff Reports</u>	
A. Director Report	A. Mike McCarty updated the Board on the upcoming presentation dates and hearing dates for the Comprehensive Master Plan and Boones Ferry Park Master Plan.
B. Community Center Report	B. Brian Stevenson reported on WERK Day and a new program – Living Well with Chronic Conditions.
C. Recreation Report	C. Erica Behler notified the Board of a new sponsorship packet she has been working on, as well as an All-Abilities Gardening Class in July. She also mentioned the Activity Guide Cover Contest – ending July 2 nd .
D. Board Comments	D. Jim inquired about the Renaissance neighborhood pond and if staff would ever assume ownership. Denise and David thanked staff for WERK Day. David expressed interested in finishing his term through December, but asked board members if they had any issues with his tardiness to meetings caused by work in Portland. Steve informed the board on his successful Birding with Benson class at Memorial Park in May.
ADJOURNED	6:11 p.m.

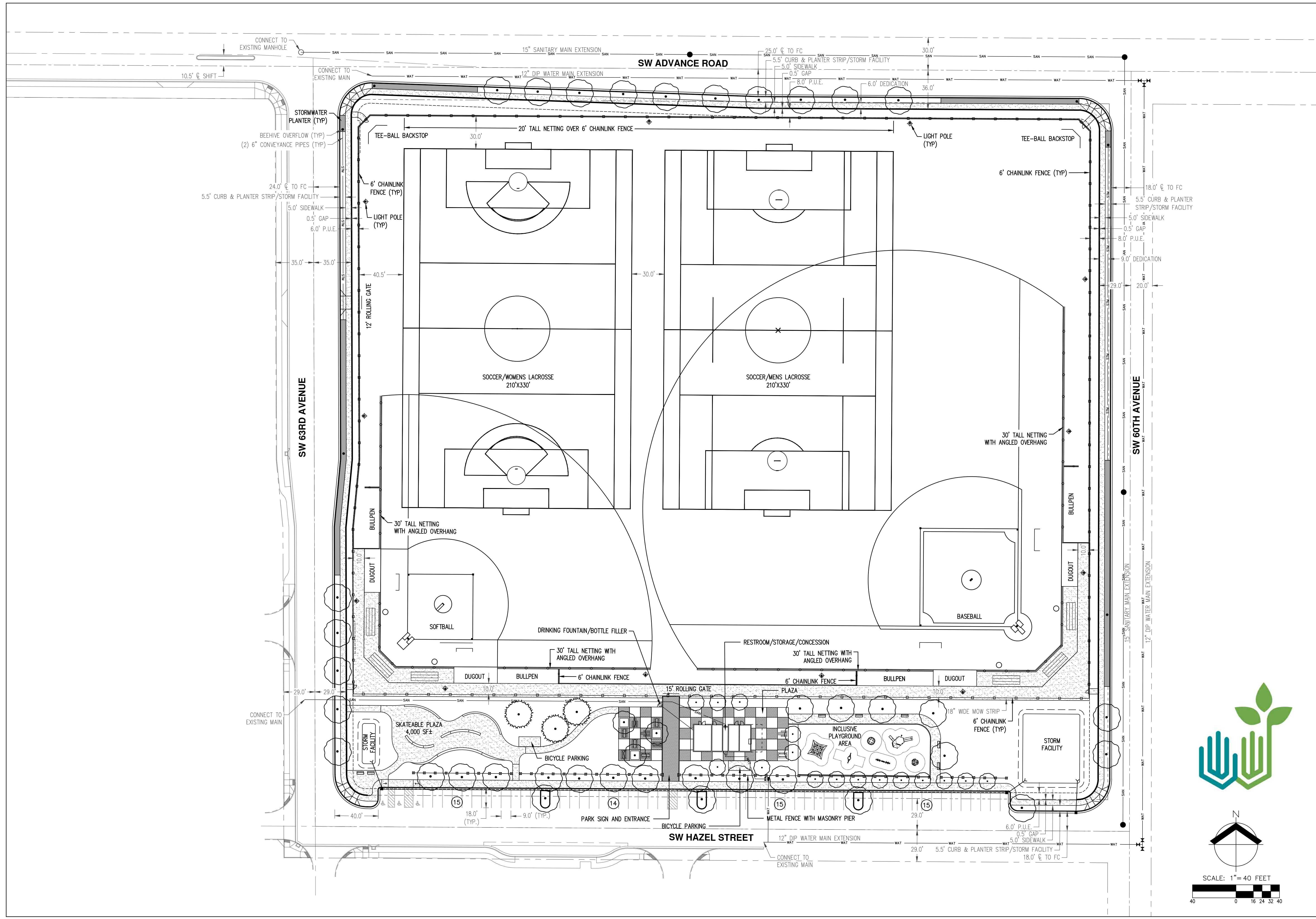
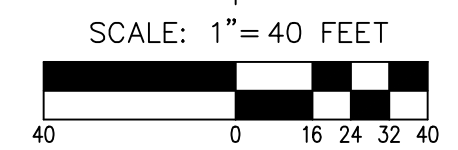
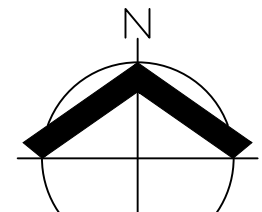


Parks & Recreation Advisory Board 2018 Goals

Please note: the list below does not indicate any priority ranking.

- Plan for developing a new skateboard park
- Complete the Wilsonville Parks & Recreation Master Plan
- Complete the Boones Ferry Park Master Plan
- Review design of Frog Pond Community Park
- Encourage Equity and Inclusion in Parks & Recreation Programming
- Advocate for Joint Use Agreement between the City and the West Linn/Wilsonville School District
- Evaluate project priority for Memorial Park Master Plan Implementation

Amended on June 11, 2018, to remove individual board member names.



AKS DRAWING FILE: 6664_20180620_FINAL_LAYOUT.DWG | LAYOUT: CIVIL LAYOUT



1 STORMWATER MANAGEMENT FACILITY



2 SKATEABLE PLAZA, APPROXIMATELY 4,000 SF



3 BICYCLE PARKING



4 SEATING PLAZA WITH SHADE TREES & SEAT WALLS



5 DRINKING FOUNTAIN, BOTTLE FILLER, & DOG BOWL



6 THEMATIC ENTRY ARCH & PARK SIGN



7 RESTROOM, CONCESSION, & STORAGE BUILDING



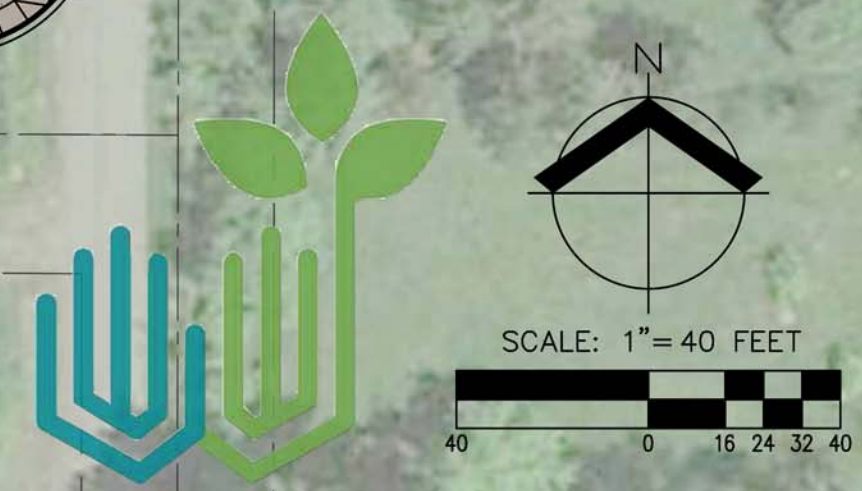
8 NATURE THEMED INCLUSIVE PLAYGROUND

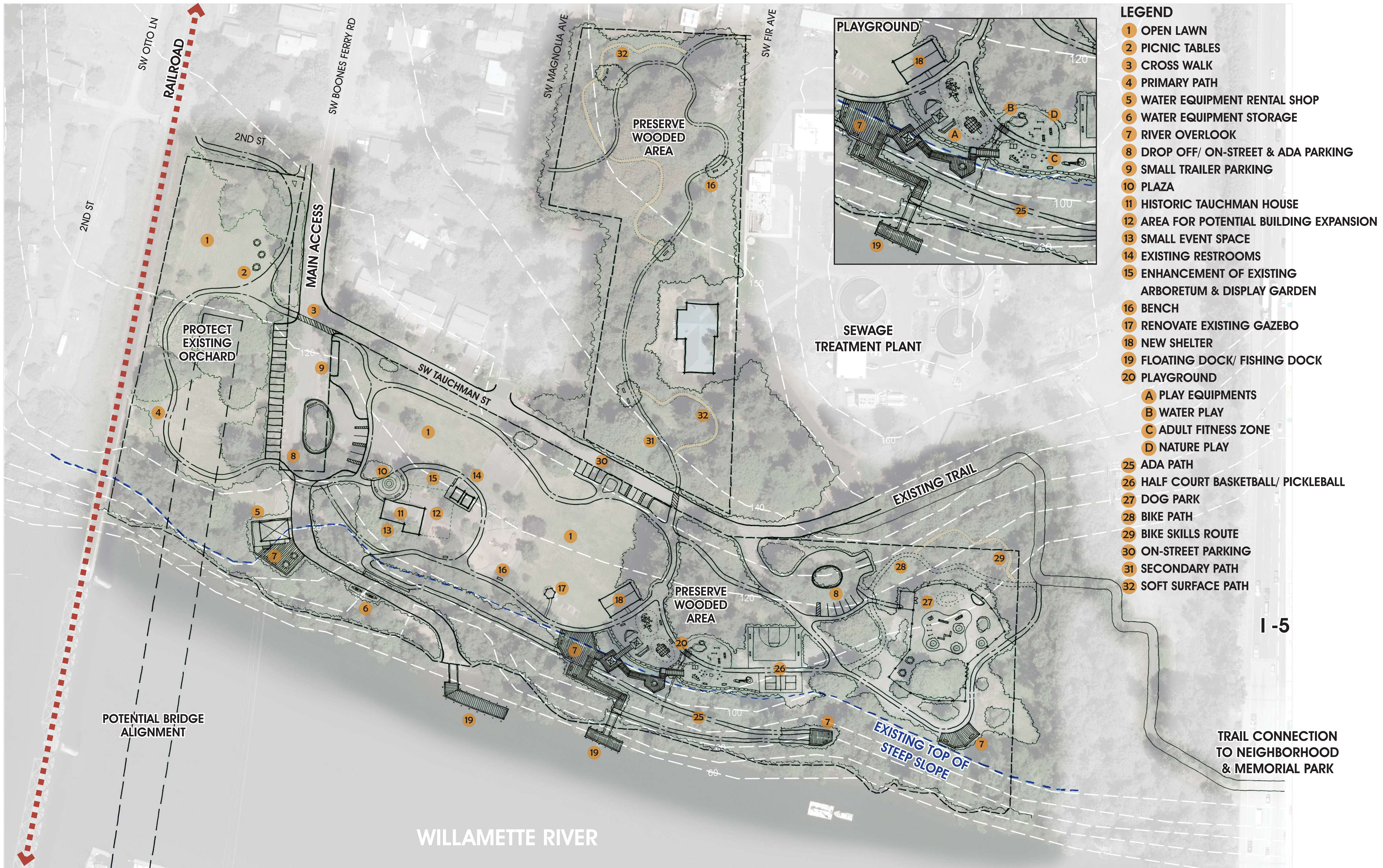


9 STREET SIDE STORMWATER PLANTERS



10





- LEGEND**
- 1 OPEN LAWN
 - 2 PICNIC TABLES
 - 3 CROSS WALK
 - 4 PRIMARY PATH
 - 5 WATER EQUIPMENT RENTAL SHOP
 - 6 WATER EQUIPMENT STORAGE
 - 7 RIVER OVERLOOK
 - 8 DROP OFF/ ON-STREET & ADA PARKING
 - 9 SMALL TRAILER PARKING
 - 10 PLAZA
 - 11 HISTORIC TAUCHMAN HOUSE
 - 12 AREA FOR POTENTIAL BUILDING EXPANSION
 - 13 SMALL EVENT SPACE
 - 14 EXISTING RESTROOMS
 - 15 ENHANCEMENT OF EXISTING ARBORETUM & DISPLAY GARDEN
 - 16 BENCH
 - 17 RENOVATE EXISTING GAZEBO
 - 18 NEW SHELTER
 - 19 FLOATING DOCK/ FISHING DOCK
 - 20 PLAYGROUND
 - A PLAY EQUIPMENTS
 - B WATER PLAY
 - C ADULT FITNESS ZONE
 - D NATURE PLAY
 - 25 ADA PATH
 - 26 HALF COURT BASKETBALL/ PICKLEBALL
 - 27 DOG PARK
 - 28 BIKE PATH
 - 29 BIKE SKILLS ROUTE
 - 30 ON-STREET PARKING
 - 31 SECONDARY PATH
 - 32 SOFT SURFACE PATH