

### From The Director's Office:

During the last month much work has occurred on the Public Work Complex site including (top photos) building the walls for vehicle wash building and (bottom photos) completing the structural support and beginning installation of siding on the warehouse.



Best Regards,

Delora Kerber, Public Works Director

## Public Works Complex

Work on the administration building in June includes (photos top to bottom) completion of the interior staircase, starting placement of siding, beginning construction of the interior walls and setting the curbing for the roof top HVAC equipment.





## Utilities—Water

### Annual Maintenance

A leak detection survey was conducted this month by our contractor, Utility Services Associates. Every year, a quarter of the City is inspected to identify any active leaks. A technician utilizes specialized listening equipment to pick up the noise of a leak off of valves, meters, and hydrants. This year's survey focused on the west side of I-5 and included all portions of the system north of Wilsonville Road. Fortunately, only a few small leaks were identified and repairs were completed. Water techs also finished the annual water system flushing and kept up with the steady number of work orders from Utility Billing.



### New Tap at the PW Complex

This month a couple of taps were installed for the new Public Works Complex. The water technicians were on site when a new water tap is being installed by a contractor. The technician is there to witness that the tap is performed properly and to be at the ready to respond in case of an issue.



## Utilities—Water cont.

### New Connections

The Water crew was very busy last month addressing an issue along 95<sup>th</sup> Avenue where a City water main was in conflict with the trench line of the 66" Willamette Water Supply pipeline being installed. Staff spent a lot of time onsite providing input about how the City infrastructure should be moved, how the shutdown would occur and identifying which businesses could potentially be affected during the work.

Once a plan was in place and approved by the City Engineering Department and Public Works Department, the contractor laid the new pipe and performed a pressure test and disinfection of the new line. We collected bacteriological samples and submitted them to the lab for testing. After receiving passing results, the contractor was able to perform the final connections of the old main to the new section of main. The Water crew assisted by performing the shutdown and setting up a temporary water connection to the Pacific Foods warehouse. Once the line was tied in, they blew off the new section of line to remove any air and then checked the new connections for any indication of leaks.

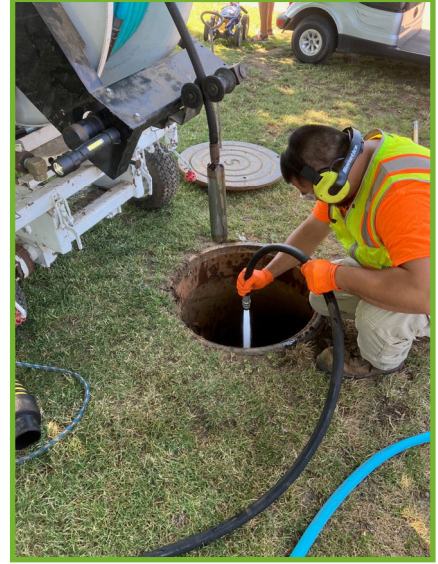




## Utilities—Wastewater

### Sewer Maintenance

Wastewater crew took advantage of the dry weather to perform cleaning and inspection of off-road manholes in Charbonneau. This work required the crew to use the easement machine in order to gain access. The easement machine is a satellite unit that attaches to the large sewer cleaning truck and allows the crew to access manholes that are not easy reach from the street. The crew also performed closed—circuit television (CCTV) inspection of the lines.



### Confined Spaces Training

The Utilities team attended a full day confined space training this month. Staff completed a half a day in the class room covering safety, regulations, equipment, and appropriate permit forms. The second half of the day was practicing how to conduct a pre-entry inspection and how to perform a rescue. The exercise was conducted at one of the water feature vaults and everyone in attendance had a chance to lower and retrieve a person out of the vault using the fall protection equipment.





## Facilities

### Landscaping at Transit Center and SMART

The Landscaping staff have been trimming up shrubs at the ArtTech building and spending some time at the transportation facilities. They cleaned up tall grasses at the Wilsonville Transit Center and at the SMART Transit Operations building. Below are the before and after photos of the areas.





## Facilities cont.

### Water Feature Upgrade

The team installed a new baffled intake pipe from the Murase Plaza water feature surge tank. This prevents any debris or toys from entering the water feature vault equipment.



### Security Camera Installation at City Hall

Staff installed a new security camera in City Hall parking lot. Facilities teamed up with the IT department to pull internet and power from the building to the parking coral for new camera install. With use of the new bucket truck we were able to install the new camera on a light post instead of hiring out the work or renting a man lift.



## Facilities cont.

### Our Janitors focus on the Details

Janitorial staff play such an important role 'behind the scenes'. In addition to their routine sanitation duties, they cleaned the air return grates at the Community Center, touched up the stainless steel hardware at the Library and even deep cleaned grout in the restrooms. We appreciate their attention to detail!



*Before*

*After*



## Roads

### Roadway Maintenance

The Roads team has primarily focused on trimming and mowing City right of way. Staff cleared several large sections along Boeckman Road and Elligsen Road, and in the medians on Wilsonville Road. Staff are wrapping up the diagnostics on the irrigation system on Tooze and Boeckman Road, nearly a 1.25 mile section starting at Grahams Ferry Road and ending just west of 95th. Additionally, staff are performing sign maintenance and cleaning up graffiti on public assets.





## Stormwater

### Outfall Clearing

The Stormwater team finished the annual catch basin cleaning and turned their attention to inspecting outfalls and culverts. Some of our assets are located 'off the beaten path', requiring power tools, personal protective equipment and persistence. Staff trimmed back any bushes that have overgrown and would otherwise interfere with their normal function.

